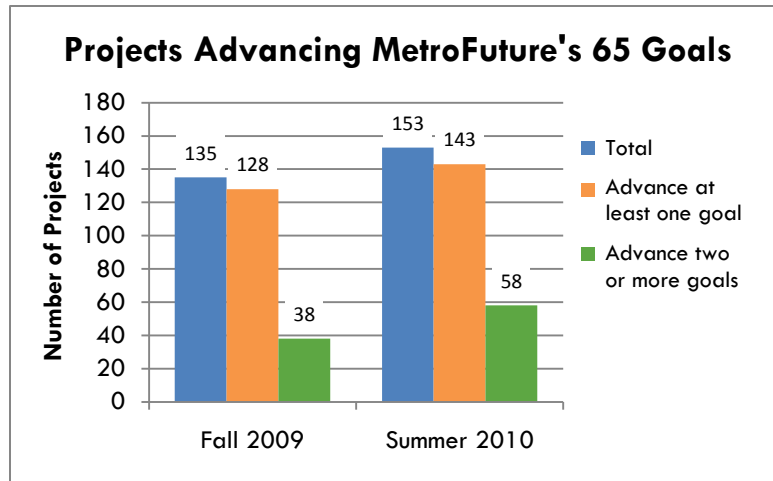


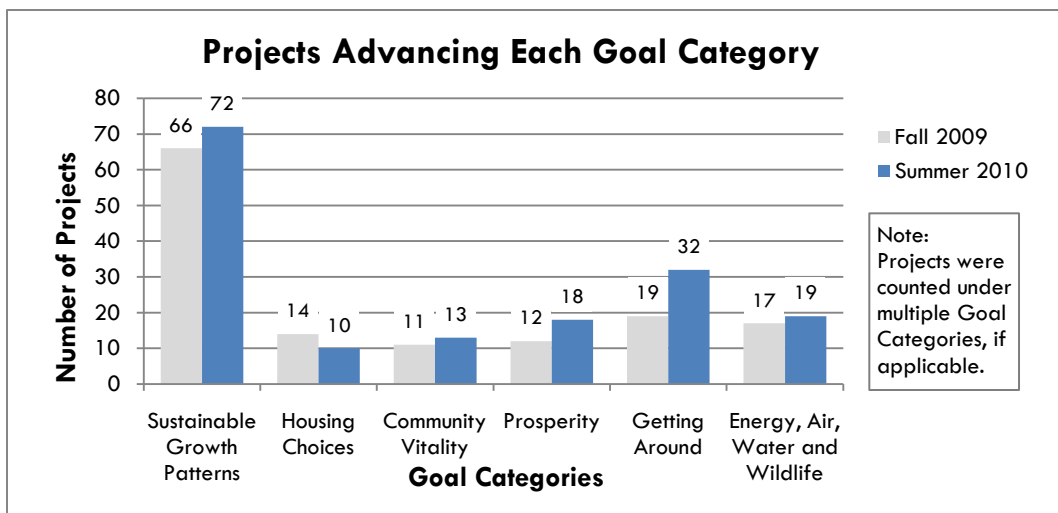
MAPC PROJECT INVENTORY – SUMMARY AND ANALYSIS

In July 2010, MAPC was working on 153 specific projects, as compared to 135 projects in fall 2009, the last time an inventory was taken. This is an increase of 13%. While most items on the list are single activities, some are collections of projects with a shared goal, such as the Green Energy Campaign. The list includes ongoing work, such as legislative monitoring and sub-regional coordination, as well as more specific, time-limited projects. Between fall 2009 and summer 2010, MAPC completed 28 projects. Roughly 100 projects from fall 2009 continued into summer 2010, and about 50 new projects begun.

Of the 153 projects active in summer 2010, 143, or 93%, directly advance one of MetroFuture's 65 goals. Six projects have no direct connection to MetroFuture's goals because the projects are internally-focused, and four projects are associated with promoting MetroFuture itself. Fifty of the plan's 65 goals, or 77%, are being actively advanced by MAPC's current projects. In fall 2009, MAPC's projects addressed 41, or 63%, of MetroFuture's goals. Of the 15 goals not currently being addressed, about half relate to education, the aging population and health.



Each of MetroFuture's 65 goals belong to one of six goal categories¹. In the chart below, projects were counted in each of the goal categories they advance. As a result, the numbers in the chart exceed the total number of projects. In summer 2010, 32 projects, or 22%, address more than one goal category. For comparison, in fall 2009 only 13% of projects met that criteria. Housing Choices is the only goal category that exhibits a decrease (29%) in activity, due to the completion of several major projects. The number of projects in the Getting Around goal category increased significantly in both absolute and percentage terms (13 projects, or 68%); the number of projects in the Prosperity goal category increased by 50%, although the overall number of projects remained modest.

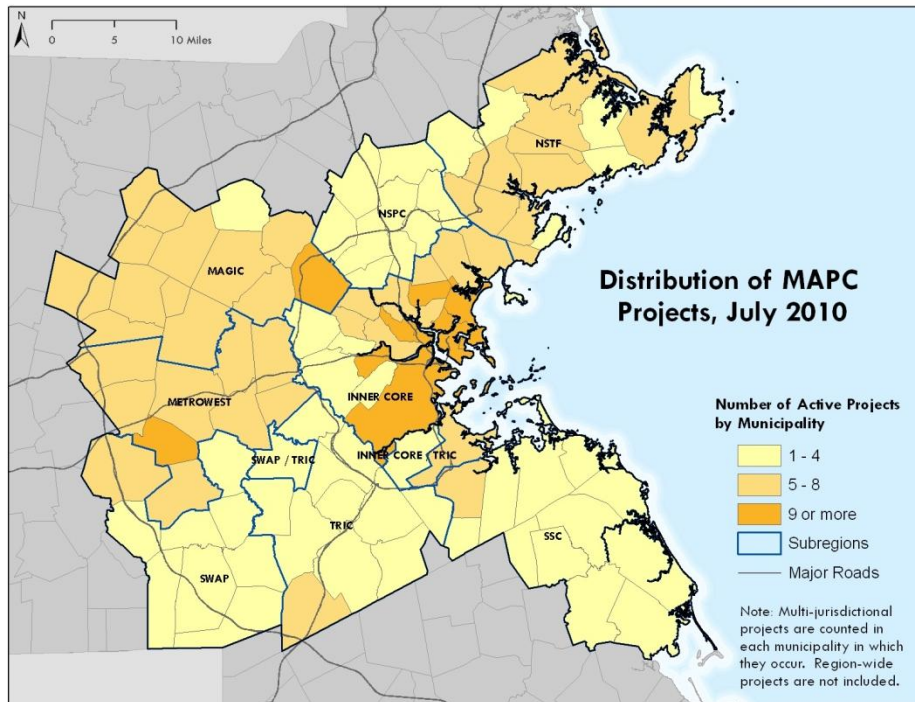


¹ The six MetroFuture goal categories are:

- Sustainable Growth Patterns: Population and job growth will be focused in developed areas already well-served by infrastructure
- Housing Choices: A diverse array of housing choices will meet the needs of the region's residents
- Healthy Communities: Residents will be safe, healthy, well-educated, and engaged in their community
- Regional Prosperity: A globally-competitive regional economy will provide opportunity for all the region's workers
- Transportation Choices: An efficient transportation system will offer more choices and make it easier to get around
- Healthy Environment: Natural resources will be protected thanks to a strong "environmental ethic"

Cross-departmental collaboration is a prominent aspect of the project list, as 58 of the projects are being advanced by collaborations between two or more departments. That represents 40% of the total number of projects. In the fall 2009 survey, only 31% of the projects involved collaborations between departments.

Many of the projects promote inter-municipal collaboration as well. Of the 143 external projects, 51 projects involve multiple municipalities. Only 17 projects are with a single city or town, and the bulk of the projects – 75 – cover the entire MAPC region or the Commonwealth.



The following table examines where MAPC is working by Community Type. While Maturing Suburbs have the greatest number of projects, the number of projects per resident is greatest in the Developing Suburbs. The number of projects per municipality is greatest in the Regional Urban Centers. This is the same general breakdown as seen in fall 2009. Notably, the percentage of projects in the Inner Core compared to the total number of projects has decreased from 23% to 18% and the percentage of projects in the Developing Suburbs has increased from 19% to 25%, while the percentage of projects in the other two Community Types remained nearly constant.

Community Type and Demographic Data			Projects by Community Type*							
			2009	2010	2009	2010	2009	2010	2009	2010
Community Type	Total Population ('09 estimates)	Number of Cities or Towns	# of MAPC Projects	# of MAPC Projects	% of Total Projects	% of Total Projects	Projects/100K Residents	Projects/100K Residents	Projects/City or Town	Projects/City or Town
Inner Core	1,420,000	16	25	21	23%	18%	1.8	1.5	1.6	1.3
Regional Urban Centers	540,000	11	26	27	24%	23%	4.8	5.0	2.4	2.5
Maturing Suburbs	900,000	44	37	41	34%	35%	4.1	4.6	0.8	0.9
Developing Suburbs	330,000	30	20	29	19%	25%	6.1	8.8	0.7	1.0

*Note: Multi-jurisdictional projects are only counted once per Community Type. Region-wide projects are not included.

This project inventory was developed by the Regional Plan Implementation Department through a series of interviews with MAPC managers. The definition of what constituted a “project” was interpreted broadly to ensure as comprehensive a list as possible. Projects were linked to MetroFuture goals and individual municipalities. Additions and corrections received from interviewees were subsequently incorporated. The list and report will be updated on a regular basis.